

Product  
Maintenance  
Manual



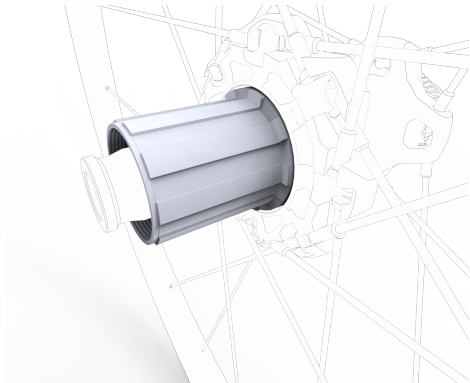
# Introduction

---

Thank you for choosing our Hub.  
This maintenance manual aims to provide guidance on how to properly care for it, ensuring its longevity and optimal performance

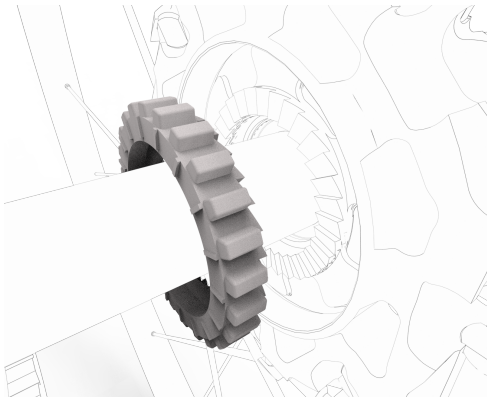
# Step 1

Remove the side cover,  
Remove the ratchet seat.



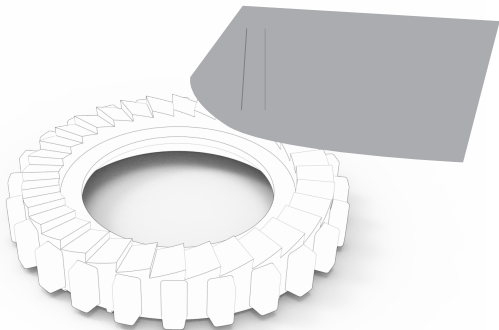
# Step 2

Remove the gear.



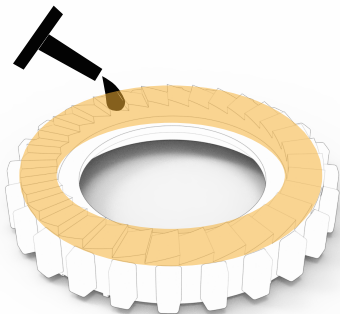
# Step 3

Wipe the gear clean with soft cloth.



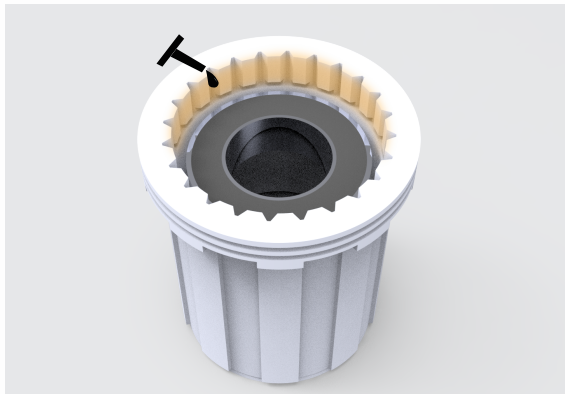
# Step 4

Wipe the gears inside the hub clean,  
Evenly distribute 5-6 drops of engine  
oil on gear circumference.



# Step 5

At the edge of ratchet seat, apply oil on teeth grooves.



# Step 6

No need to apply oil on the gears inside the hub.

Please reassemble in sequence after maintenance completed.





# **Recommendations**

The maintenance cycle is once every 6 weeks.