



FOSS

2024 Product Catalog

About Us



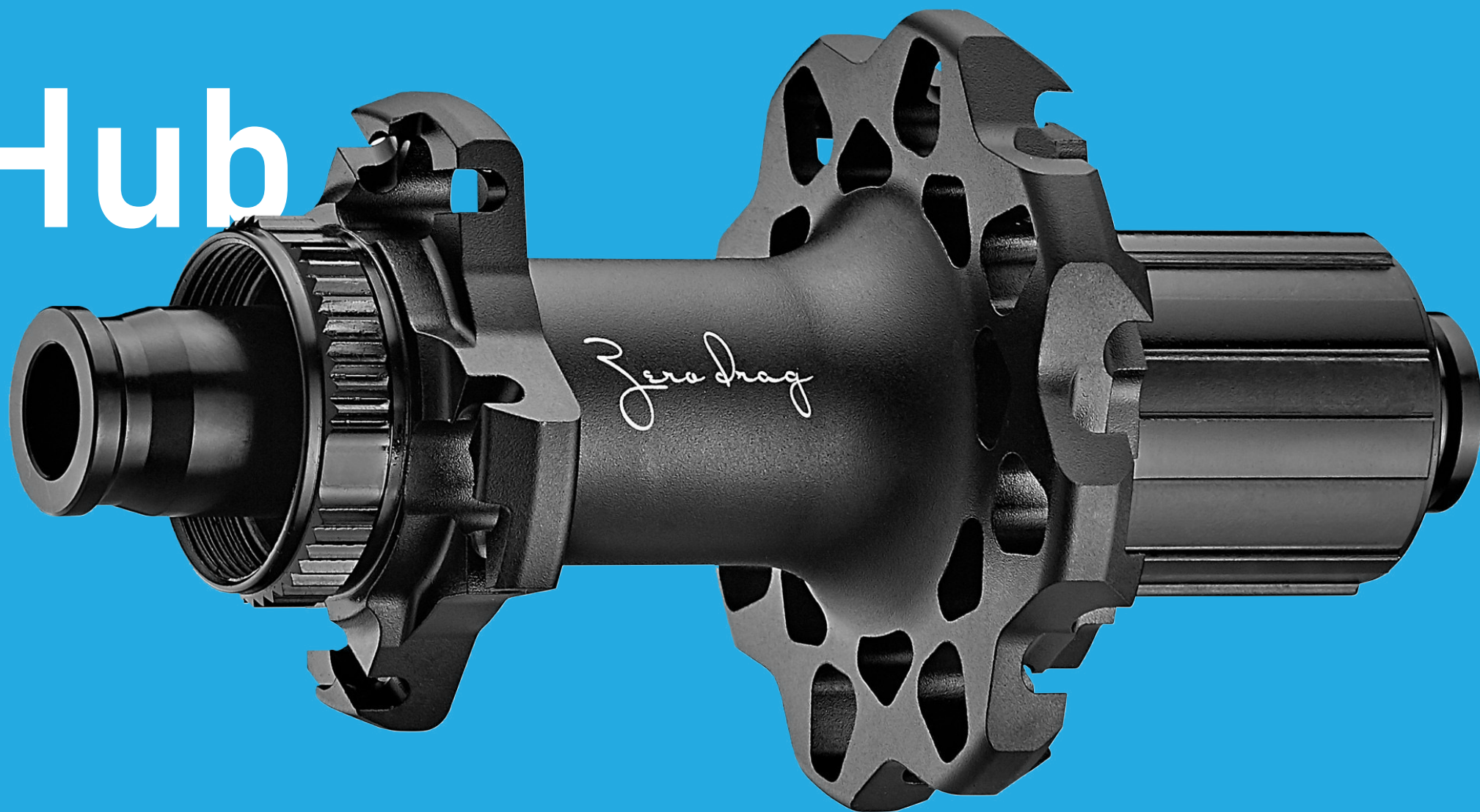
FOSS, the eco-friendly enterprise founded by Amos Tien, is dedicated to combating the environmental damage caused by global warming and pollution. Starting with bicycle inner tubes, FOSS has developed innovative products such as the FOSS explosion-proof inner tube, which not only prevents immediate punctures but also features a quick repair FOSS Patch. After use, these tubes can be recycled into plastic rubber material, aligning with the 3R principle of Reduce, Reuse, Recycle.

Expanding their focus, FOSS revolutionized the wheel industry with their turbine fan-shaped arrangement free hub, boasting a simple gear system and low rolling resistance for enhanced gliding speed and distance. Recognized with awards like the EUROP WINNER AWARD 2015 and the Taipei Cycle by IF d&i awards 2015, FOSS continued their innovative streak with the Foss Zero Drag Silent Hub in 2018.

In pursuit of lightweight and strong rigidity, FOSS developed Carbon Fiber Spokes, offering features such as weight reduction and enhanced transmission power compared to traditional metal spokes.

Looking ahead, FOSS remains committed to their mission of environmental protection while embracing innovation in the Industry 4.0 era, guided by the motto "Make impossible possible."

Silen Hub



Silen Hub Feature

1. Zero Drag Hub system
2. Top speed in shortest time
3. Lengthen gliding distance with gliding speed maintained
4. Effectively eliminate noise
5. The most easily maintainable zero-drag hub



IF Design Award 2018: Taipei Cycle Show-- Zero Drag Silent Hub

TAIPEI CYCLE d&I awards 2022--FOSS Zero Drag Silent Wheel set



Silen Hub



FRS-01
ROAD HUB
(Front)

- * Type : 2 seal bearing
- * Hole : 20
- * P.C.D : 39mm
- * O.L.D : 100mm
- * Axle : Φ 9mm(ID5)
- * Flange: 77mm
- * Weight: 110g



FRS-21
ROAD HUB
(Rear)

- * Type : 4 seal bearing
- * Hole : 24(1:1),/24(2:1)
- * Shimano 11s or XDR
- * P.C.D : 41mm / 47mm
- * O.L.D : 130mm
- * Flange: 57mm
- * Axle : Φ 9mm(ID5)
- * Weight: 246g



FRS-01D
ROAD HUB
DISC
(Front)

- * Type : 2 seal bearing
- * Hole : 24(1:1)
- * P.C.D : 42mm
- * O.L.D : 100mm
- * Thru Axle : Φ 12mm
- * Flange: 55mm
- * Disc Brake Shimano center lock
- * Weight: 124g



FRS-21D
ROAD HUB
DISC
(Rear)

- * Type : 4 seal bearing
- * Hole : 24(1:1)
- * Shimano 11s or XDR
- * Disc Brake Shimano center lock
- * P.C.D : 41mm / 47mm
- * O.L.D : 135mm , 142mm
- * Thru Axle : Φ 12mm
- * Flange: 57mm
- * Weight: 246g



FMJ-37D
MTB HUB
DISC
(Rear)

- * Type : 4 seal bearing
- * Hole : 32
- * Shimano 11s or XDR
- * P.C.D : 58mm / 58mm
- * O.L.D : 142mm, 148mm
- * Thru Axle : Φ 12mm
- * Flange: 56mm
- * Disc Brake Shimano center lock
or Disc Brake XDR center lock
- * weight: 288g



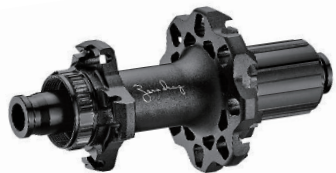
FCS-01D
Carbon Spokes
Road Hub
Disc (Front)

- * Type : 2 seal bearing
- * Hole : 20(1:1)
- * P.C.D : 41mm/47mm
- * O.L.D : 100mm
- * Thru Axle : Φ 12mm
- * Flange: 56mm
- * Disc Brake Shimano center lock
- * Weight: 140g



FMJ-01D
MTB HUB
DISC
(Front)

- * Type : 2 seal bearing
- * Hole : 28(1:1)
- * P.C.D : 45mm/45mm
- * O.L.D : 100mm
- * Thru Axle : Φ 12mm
- * Flange: 59mm
- * Disc Brake Shimano center lock
- * Weight: 140g



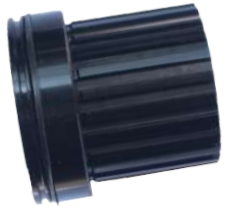
FCS-21D
Carbon Spokes
Road Hub
Disc (Rear)

- * Type : 4 seal bearing
- * Hole : 24(2:1)
- * Shimano 11s or XDR
- * Disc Brake Shimano center lock
- * P.C.D : 47mm / 63mm
- * O.L.D : 142mm
- * Thru Axle : Φ 12mm
- * Flange: 57mm
- * Weight: 284g



Freehub

Sram XDR freehub



Freehub-MS

MS freehub

Carbon Fiber Spoke

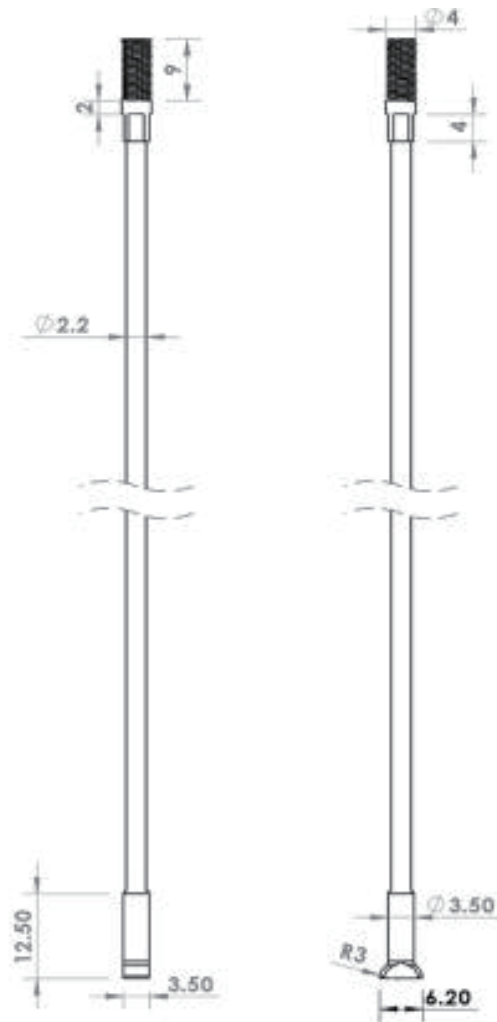


Spoke Feature



1. Full carbon fiber for main body
2. Significant lightness
3. Anti-twisted mechanism
4. Strong rigidity
5. Effectively reduce force offsetting
6. No degumming





Details

T: 9mm

D1: 3.5mm

D2 : 2.2mm

D3 : 4mm

H: 6.2mm

L: 250-310mm

Nipple: Alloy

Weight(260mm): 2.3g

Zero Drag Silen Wheelset



Wheelset Feature

1. Use Foss zero drag hub system and high rigidity of carbon fiber rim.
 - By zero drag hub system, the riders can get up to the top speed within the short time period.
 - Zero drag hub can effectively lengthen gliding distance and maintain gliding speed when the rider does not step on peddles.
 - By Zero drag hub, the rider can have a tranquil journey.
2. Use Planetary Ratchet Hub system
 - By Planetary Ratchet Hub system, it could generate apparent sounds during riding.





Carbon 50

- * Zero Drag Silent Hub FCS-01D/21D
- * Disc brake
- * Foss carbon spoke
- * Rim material/color : Carbon / black
- * Front rim dimension: 622/50/25 (mm) or 633/50/28 (mm)
- * Rear rim dimension: 622/50/25 (mm) or 633/50/28 (mm)
- * Tire type: Tubless Ready
- * Shimano11s and Sram XDR compatible
- * Weight: 1390g/sets



Carbon 35

- * Zero Drag Silent Hub FRS-01D/21D or FCS-01D/21D
- * Disc brake
- * Sapim spoke or Foss carbon spoke
- * Rim material/color : Carbon / black
- * Front rim dimension: 622/35/25 (mm) or 633/35/28 (mm)
- * Rear rim dimension: 622/35/25 (mm) or 633/35/28 (mm)
- * Tire type: Tubless Ready
- * Shimano11s and Sram XDR compatible
- * Weight: 1360g/sets



Gravel 18

- * Zero Drag Silent Hub FMJ-01D/37D
- * Disc brake
- * steel spoke
- * Rim material/color : Aluminum alloy / black
- * Front rim dimension: 622/19/28 (mm)
- * Rear rim dimension: 622/19/28 (mm)
- * Tire type: Tubeless Ready
- * Shimano 11s, ms and Sram XDR compatible
- * Weight: 1900g/sets



231A

- * Zero Drag Silent Hub FRS-01/21 or FRS-0121D
- * Rim brake or Disc brake
- * Sapim spoke
- * Rim material/color : Aluminum alloy / black
- * Front rim dimension: 622/23/22 (mm) or 622/25/20 (mm)
- * Rear rim dimension: 622/23/22 (mm) or 622/25/20 (mm)
- * Tire type: Clincher
- * Shimano 11s and Sram XDR compatible
- * Weight: 1474g/sets



A Innovation Company

Website:<http://www.foss.com.tw/>



<https://reurl.cc/L4L7m9>

